



Language: English  

Search our catalog 

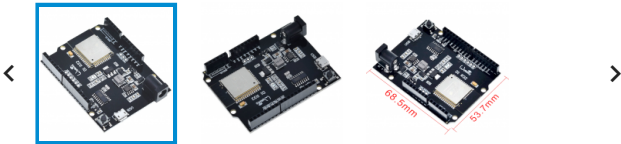
(0)

MENU

Home / MicroController Boards / ESP / Wemos® D1 R32 w/ ESP32 UNO R3 pinout

ON SALE!

-€2.44



WEMOS® D1 R32 W/ ESP32 UNO R3 PINOUT

Reference :ARD02075

€12.11

€9.67 SAVE €2.44

ESP32 WiFi + bluetooth Board 4MB Flash

Quantity

1  

 ADD TO CART

Share

Description

If you have any questions on this product please feel free to [contact us](#).

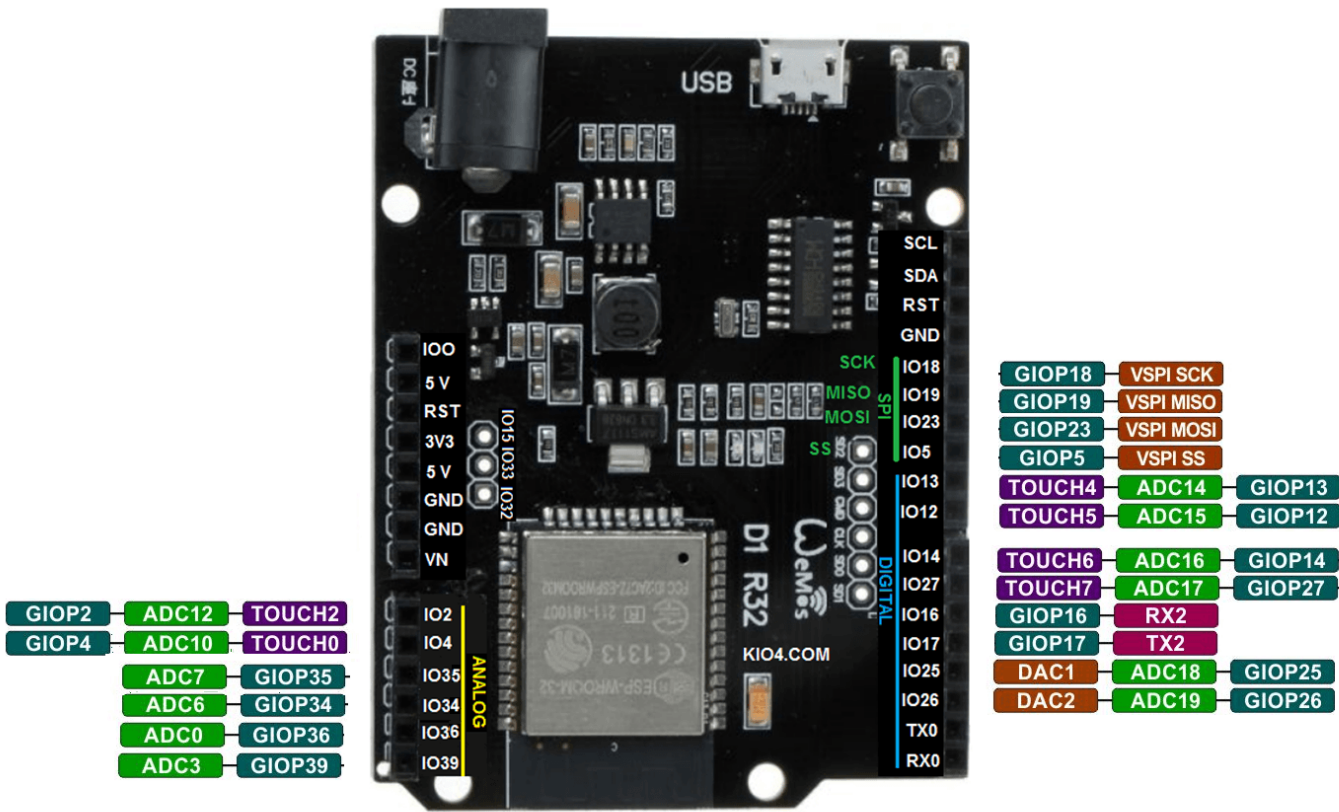
***Disclaimer:** The images are merely illustrative.

This board is used with dual-mode Wi-Fi and Bluetooth chips, which is safe, reliable, and scalable to a variety of applications.

Features:

- DC 5V-12V
- 1 analog input(3.2V max input)
- a Micro USB connection
- Compatible with
- D1 R32=WiFi+bluetooth+UNO

Pinout:



More info:

<https://www.espressif.com/en/support/documents/technical-documents>

YOU MIGHT ALSO LIKE

ON SALE!



Arduino UNO R3 Original



Cable USB 2.0 A - Micro USB B Male



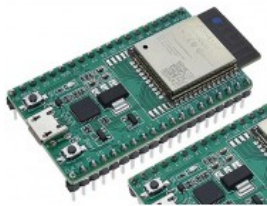
ESP32-WROVER-I Module WiFi+Bluetooth



ESP32 WiFi Bluetooth LoRa SX1278...



LuaNode32 ESP32 Development Board...



ESP32-DEVKITC V4 ESP-WROOM-32D...

€8.70

YOUR ACCOUNT



OUR COMPANY



STORE INFORMATION

© 2022 - [botnroll.com®](#) is a brand name from company "SAR - Soluções de Automação e Robótica, LDA" with VAT number PT507410823